

Mouldflo

Mouldflo

INSTALLATION QUICK GUIDE

MOULDFLO A/S
Copyright © 2017

Mouldflo A/S
Dynamovej 11, 2tv
2860 Søborg - Denmark (DK)
CVR: 36459344

Tel.: +45 40 20 77 22
Sales@mouldflo.com
www.mouldflo.com

Introduction

The Quick Guide is meant as an easy-to-use guide to help make your installation as simple as possible. However, please be aware that the **Quick Guide** is a supplement to the Installation User Guides and can, therefore, not stand alone.

Please ensure to read the **Installation User Guides (Manifold, interface and software)** through thoroughly before installing your new Mouldflo.

Warning

Flow must never exceed more than 10% of the maximum capacity; failure to comply with this precaution may damage the sensor.

During start-up and purge, always follow the **Quick Guide**.

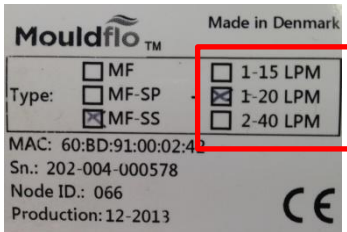
For further information/details, please be referred to relevant **Installation User Guides** which can be found on www.mouldflo.com.

Disclaimer

Costs connected to any damages to the products caused by lack of following the Instruction Manual, will be at the customers' own expense.

Prior to start-up

Check the label on the manifold to identify the flow sensor type:



Flow must never exceed more than 10% of the maximum capacity; failure to comply with this precaution may damage the sensor.

Start-up procedure

During start-up (*empty mould and manifold*)



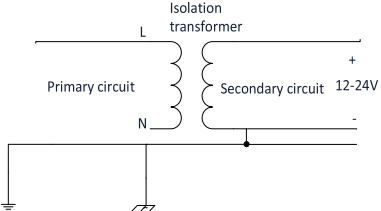
1. Fully open all mini ball valves to/from the mould.
2. Open the main return outlet valve on the manifold.
3. Slowly open the main inlet valve on the manifold and start filling the system.
4. Adjust the inlet flow to match only the flow needed.
5. Let it run until all air is out of the system before fully opening the main valve.


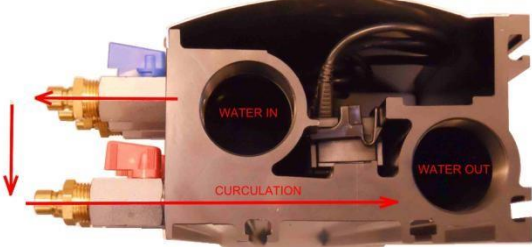

Purging (*emptying Mould with pressurized air*)

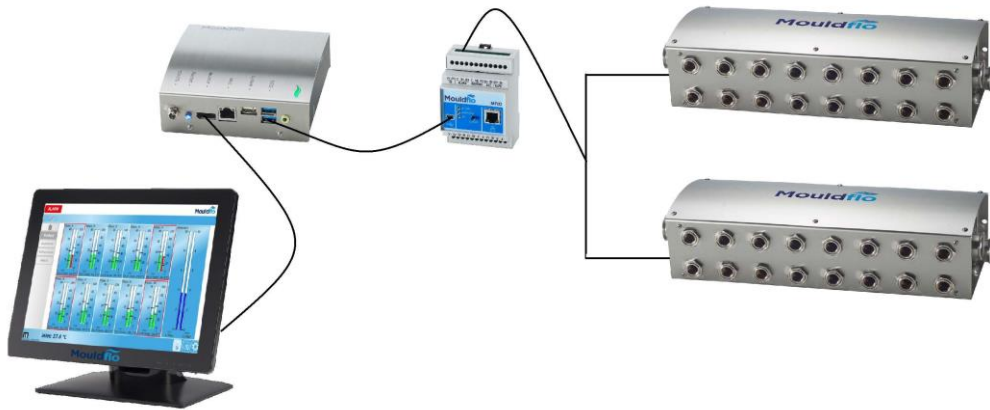
3-way ball valve is recommended to be installed on main inlet and outlet of the manifold. Pressurized air inlet must be adjustable (pressure reducer)

1. Turn the main inlet valve in blocked/closed position.
2. Turn the main outlet valve in "drain" position.
3. Turn the main inlet valve in "pressure air in position".
4. Open the adjustable air **without exceeding 0,5 bar**, and ensure slow purge of water.
5. When system is almost empty you can open the air supply to blow circuits dry.

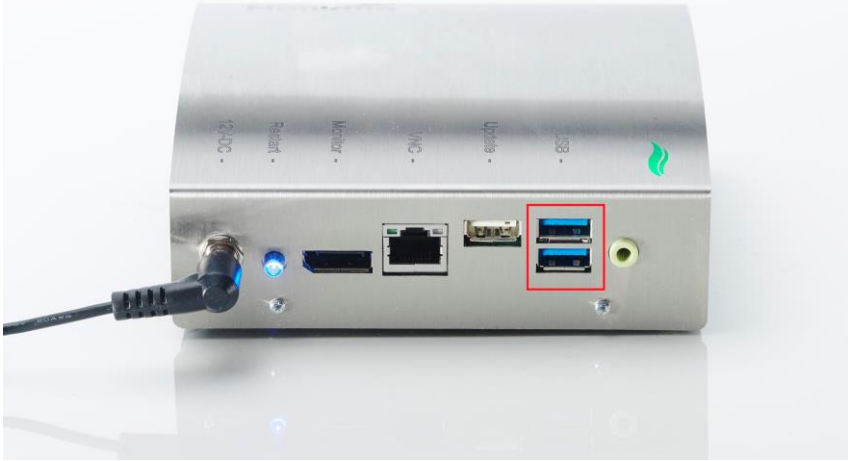

Installation Guide

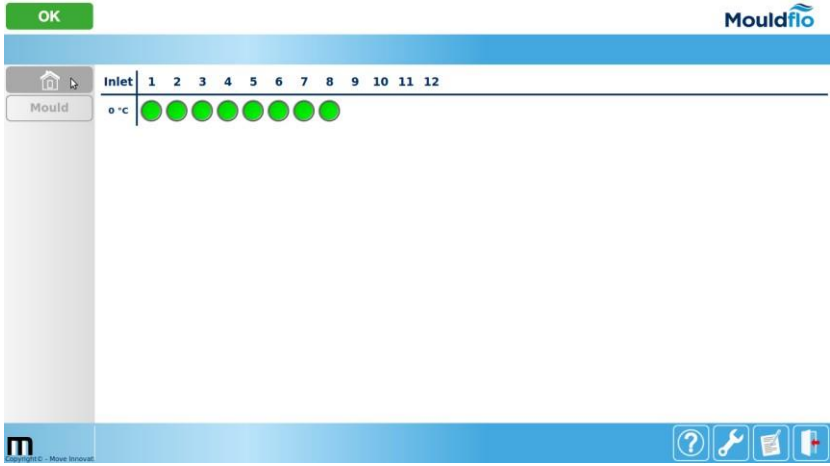
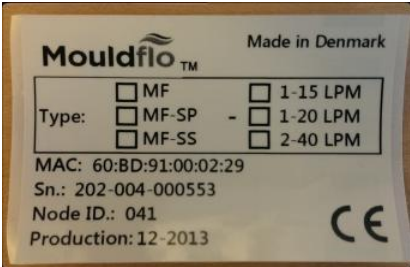
Step 1:	Installation package includes
<p>1. Check that all elements are included</p>	<p>Check that the following elements are included in your package:</p> <ul style="list-style-type: none"> ✓ 1-8 Mouldflo manifold ✓ 1 MFIO ✓ 1 Mouldflo monitor ✓ 1 Power supply 24V
Step 2:	Unpack MFIO, MFS and Power supply
<p>1. Unpack the power supply, MFIO and MFS Server</p> <p>Please note that it is possible to use an existing power supply as long as it is grounded according to PELV.</p>	
Step 3:	Connect power
<p>1. The MFIO is to be connected to a 12-24V power source wire connection according to a PELV standard.</p> <p>In order to obtain a correction operation of the Mouldflo manifold, the negative DC voltage needs to be connected to earth on the supply.</p> <p>Important!</p> <p>If the negative voltage is not connected to earth ground, you might see flow channels that do not function correctly, and instead show wrong values or spikes.</p>	 <p>PELV Standard</p> 

<p>Step 4:</p>	<p>Connect power to MFIO</p>
<p>The MIFO is the connection box between the Mouldflo monitor and the manifold. A MIFO is designed to include 1-6 manifolds per machine.</p> <p>1. Connect the power supply to the MFIO by connecting one of the 0V and V+ to a voltage source in voltage range 9V-26V.</p>	
<p>Step 5:</p>	<p>Prepare the manifold</p>
<p>1. Connect the fittings for main water (in and out) and mount the blinding fitting in the other end.</p>	
<p>2. Mount the fitting of your choice.</p>	



Step 6:	Connect the manifold to the MFIO
<p>1. In order to connect the MFIO to the manifolds, connect the M12 cable to either port 1 or port 2 on the MFIO</p> <p>You can connect up to 8 manifolds parallel(daisy chained) by connecting them to one of the ports on the MFIO.</p>	<p>The image shows a blue M12 cable connector assembly. It consists of a central T-shaped connector with three ports. Two ports are on the horizontal axis, and one is on the vertical axis. Each port has a blue M12 cable connector attached to it.</p>

<p>Step 7:</p>	<p>Connect the MFIO to the MFS</p>
<p>Connect the MFS to the MFIO by using one of the 2 USB plugs and the USB cable</p>	
<p>Step 8:</p>	<p>Connect the Mouldflo monitor</p>
<p>1. Connect the power supply to the monitor</p> <p>2. Connect the display cable between the monitor and the MFIO</p> <p>You are now ready to turn on the power for the Mouldflo system.</p>	

Step 9:	Connect the manifold to the MFIO
<p>1. Turn on the power for the MFS server.</p> <p>2. When the MFS is booted, the manifold you have connected will turn up on the screen and detect the manifolds that are connected.</p>	
<p>The manifold detected by the "Node ID" corresponds with the Manifold number on the left side of the screen</p>	

Step 10:

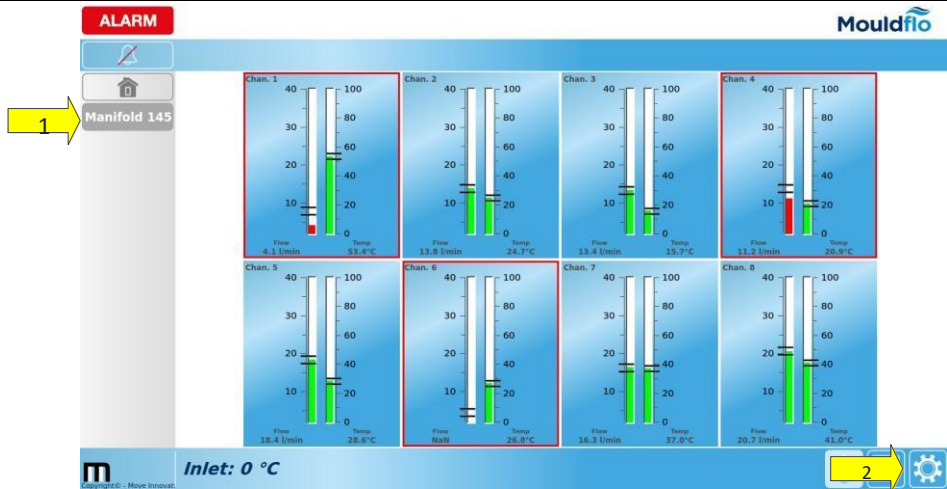
Configure the Manifolds

1. Select the manifold which you would like to configure by touching the screen.

2. Push the configuration icon in the lower right corner.

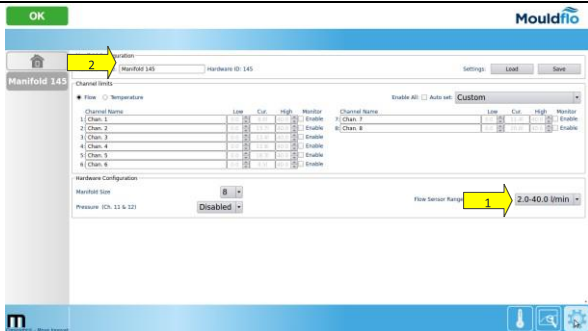
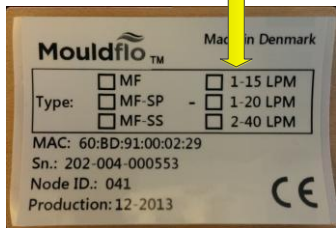


3. You are now on the Manifold configuration page.



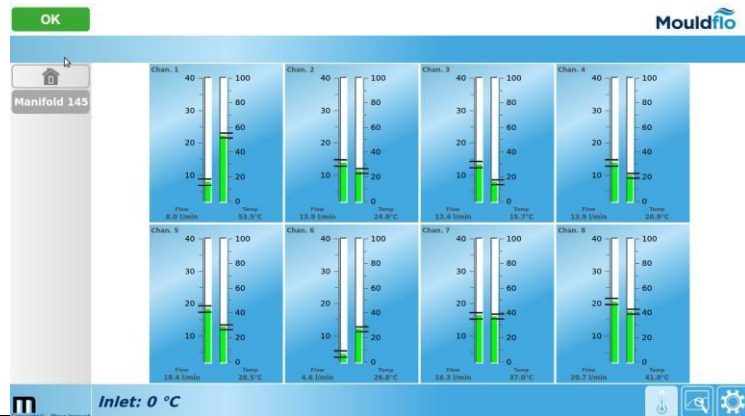
1. Start by selecting the correct flow range specified on the Manifold label.

2. Check that the manifold has the correct pressure option.

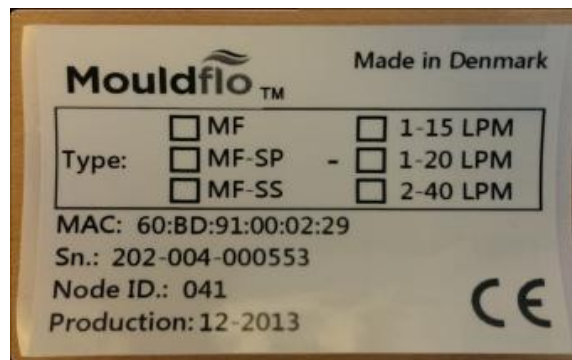


3. If you wish to rename the Manifold and channel, you are able to do so.

4. If the water is flowing, you are able to set the accepted flow range either manually, or by selecting the simple range, thereby, enabling the alarms.



5. If there are several manifolds connected, continue configuring the rest of the system.



YOU ARE NOW READY TO USE THE SYSTEM!